



Center for
Testing and
European
Certification

REGISTRATION NUMBER 12 OF THE REGISTER
OF THE MINISTRY OF REGIONAL DEVELOPMENT AND PUBLIC
WORKS

CERTIFICATE OF CONFORMITY

12 - **HYПBCПCPБ – 1523**

Issued pursuant to art. 14, paragraph 1 and/or art.2 of the Ordinance № РД-02-20-1/05.02.2015 on the terms and conditions for use of construction products in the construction of the Republic of Bulgaria (HYПBCПCPБ) of the Ministry of Regional Development and Public Works for the Construction Product:

Hot-rolled steel for reinforcement of concrete

B 500B – N8, N10, N12, N14, N16, N18, N20, N22, N25, N28, N32, N36, N40

B 500C – N8, N10, N12, N14, N16, N18, N20, N22, N25, N28, N32, N36, N40

Designed for ordinary /non – prestressed / reinforcement of concrete and technical properties described in an Annex,

placed on the market by

YEŞİLYURT DEMİR ÇELİK END. VE LİMAN İŞL. A.Ş.,
Cumhuriyet Mah. Akal cad. NO :1 Tekkekoy-Samsun, Türkiye

and produced in the plant

YEŞİLYURT DEMİR ÇELİK END. VE LİMAN İŞL. A.Ş.,
Cumhuriyet Mah. Akal cad. NO :1 Tekkekoy-Samsun, Türkiye

This certificate attests that the product has been assessed and complies with the national requirements set out in

BDS 9252:2007

The certificate was issued for the first time on 27.05.2022 and remains valid, provided that the manufacturer ensures consistency of the product characteristics and conditions of production or production control are not significantly altered.

The validity of the certificate is confirmed annually by re-issuance in compliance with the rules of certification of Center for Testing and European Certification Ltd.

First issue: 27.05.2022r.

Current issue: 27.05.2022r.

Expiry date: 27.05.2023r.

Manager:
Eng. Blagovesta Shineva®



This Certificate includes one Annex with 2 (two) pages



**REGISTRATION NUMBER 12 OF THE REGISTER
OF THE MINISTRY OF REGIONAL DEVELOPMENT AND PUBLIC
WORKS**

**ANNEX
TO CERTIFICATE 12 – НУРВСПСРБ – 1523**

1. Technical properties:

1.1 Chemical properties of the reinforcing steel: in compliance with BDS 9252:2007 art.6.1 and art.6.2, table 3

1.2 Geometrical dimensions of the ribbed reinforcing steel: in compliance with BDS 9252:2007 art. 5.3, table 2

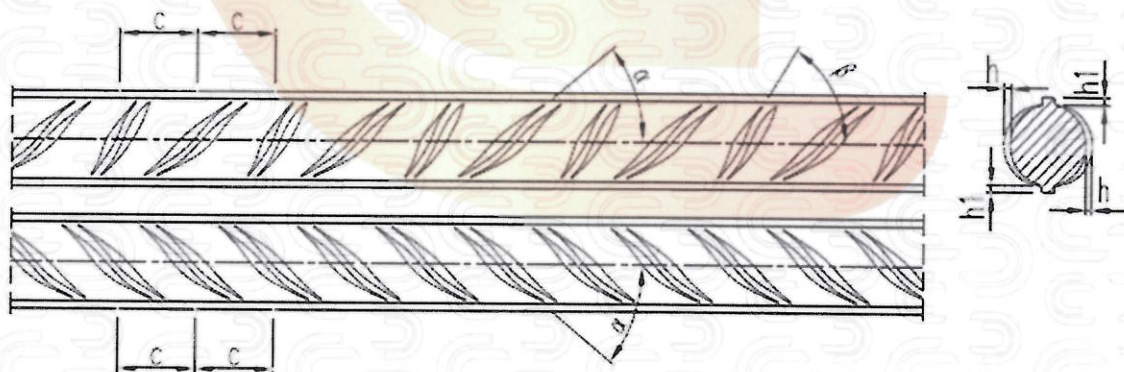
1.3 Dimensions and tolerance on dimensions: in compliance with BDS 9252:2007 art. 5.2, table 1

1.4 Physical mechanical properties:

Property	Measurement unit	Class requirements B500B
Yield strength R_e	MPa	≥ 500
Tensile strength R_m	MPa	≥ 550
Percentage total elongation at maximum force A_{gt}	%	≥ 5
Ratio R_m / R_e	-	$\geq 1,08$
Ratio $R_{e,act} / R_{e,nom}$	-	$\leq 1,25$
Bendability: - bending - re-bending	-	In compliance with BDS 9252:2007 art.6.3, table 4

2. **Marking:** in compliance with BDS EN 10080:2005

3. **Ribbing scheme:** in compliance with BDS 9252: 2007 Annex A, figure 2



First issue: 27.05.2022r.

Current issue: 27.05.2022r.

Expiry date: 27.05.2023r.

Manager:
Eng. Blagovesta Shinyova



**REGISTRATION NUMBER 12 OF THE REGISTER
OF THE MINISTRY OF REGIONAL DEVELOPMENT AND PUBLIC
WORKS**

**A N N E X
TO CERTIFICATE 12 – НУРВСПСРБ – 1523**

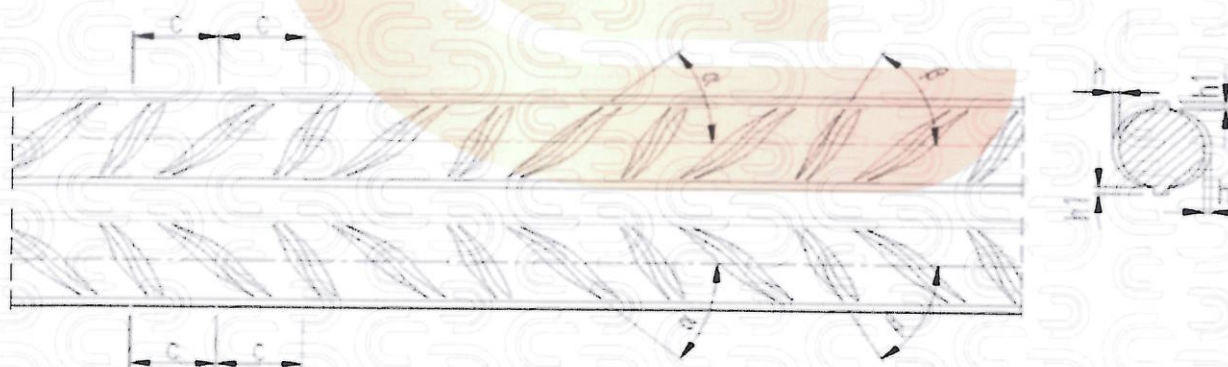
1. Technical properties:

- 1.1 Chemical properties of the reinforcing steel: in compliance with BDS 9252:2007 art.6.1 and art.6.2, table 3
1.2 Geometrical dimensions of the ribbed reinforcing steel: in compliance with BDS 9252:2007 art. 5.3, table 2
1.3 Dimensions and tolerance on dimensions: in compliance with BDS 9252:2007 art. 5.2, table 1
1.4 Physical mechanical properties:

Property	Measurement unit	Class requirements B500C
Yield strength R_e	MPa	≥ 500
Tensile strength R_m	MPa	≥ 575
Percentage total elongation at maximum force A_{gt}	%	$\geq 7,5$
Ratio R_m / R_e	-	$> 1,15 < 1,35$
Ratio $R_{e,act} / R_{e,nom}$	-	$\leq 1,25$
Bendability: - bending - re-bending	-	In compliance with BDS 9252:2007 art.6.3, table 4

2. **Marking:** in compliance with BDS EN 10080:2005

3. **Ribbing scheme:** in compliance with BDS 9252: 2007 Annex A, figure 3



First issue: 27.05.2022r.

Current issue: 27.05.2022r.

Expiry date: 27.05.2023r.

Manager:
Eng. Blagovesta Shineva

